



CAT6 UTP ANGLED EURO MODULE

Technical information



Features:

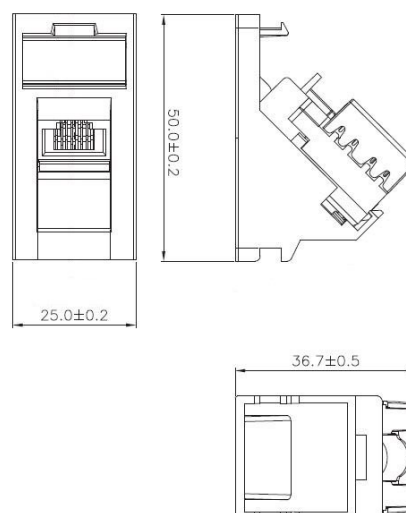
- ◆ Cat6 compliant performance
- ◆ T568B wiring
- ◆ Flat front with angled aperture
- ◆ Protected labelling facility
- ◆ Dual block 110/LSA punchdown
- ◆ Cable strain relief facility
- ◆ PoE+ IEEE802.3at (30-33W) compliant
- ◆ 25 year Ultima System Warranty

Materials

Fascia & RJ45 Jack Housing	ABS UL94-HB, White
RJ45 Jack Contact	Phosphor bronze, nickel plated, finished with 50μ gold plating on plug contact area
IDC Contact	Phosphor bronze, tin plated
Shutter	ABS UL94-HB, White

Performance

Insertion Force	20N max.
Retention Strength	7.7kg between Jack and Plug
Operating Temperature	-10°C to 60°C
Mating Cycles	750 cycles min.
IDC Wire Range	22-26 AWG stranded or solid wire. Compatible with 110 and LSA punchdown tools



Part Number

Item	Description	Type	Style	Colour
796053	Cat6 Angled Module	Unshielded	Euro	White