

IP68 CAT6A BULKHEAD OUTLET



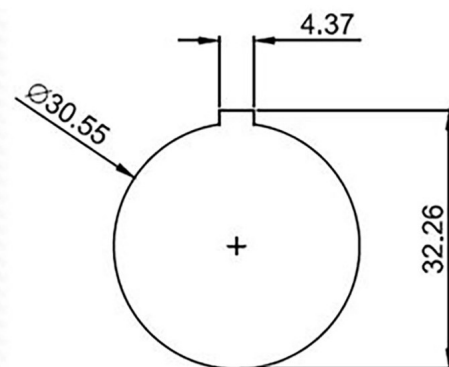
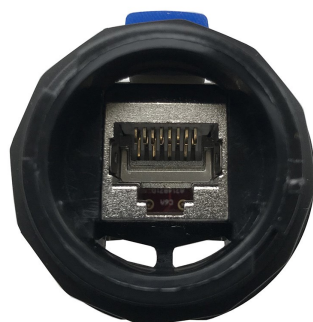
Technical information

Features:

- ◆ Screened Cat6A RJ45 outlet
- ◆ Suitable for solid and stranded wires
- ◆ No special tools required
- ◆ Water and dust proof
- ◆ Backwards compatible to Cat6 and Cat5e
- ◆ Supports applications up to 10G Ethernet
- ◆ Bulkhead thickness up to 2mm
- ◆ For use with IP68 RJ45 Plug (820909)

RJ45 Jack Specifications

Jack Body	Zinc alloy
Jack Contacts	Phosphor bronze, finished with gold plating
Mating Cycles	750
Suitable Wire Sizes	Stranded AWG22-27, Solid AWG22-26



820841 Mated With IP68 Cat6A Plug

Part Numbers

Item	Description	Type	IP Rating	Colour
820841	Cat6A Bulkhead Outlet	Shielded	IP68	Black
820843	Cap For Bulkhead Outlet	Bayonet Fitting	IP68	Black