

CAT6 U/UTP LSZH PATCH LEADS



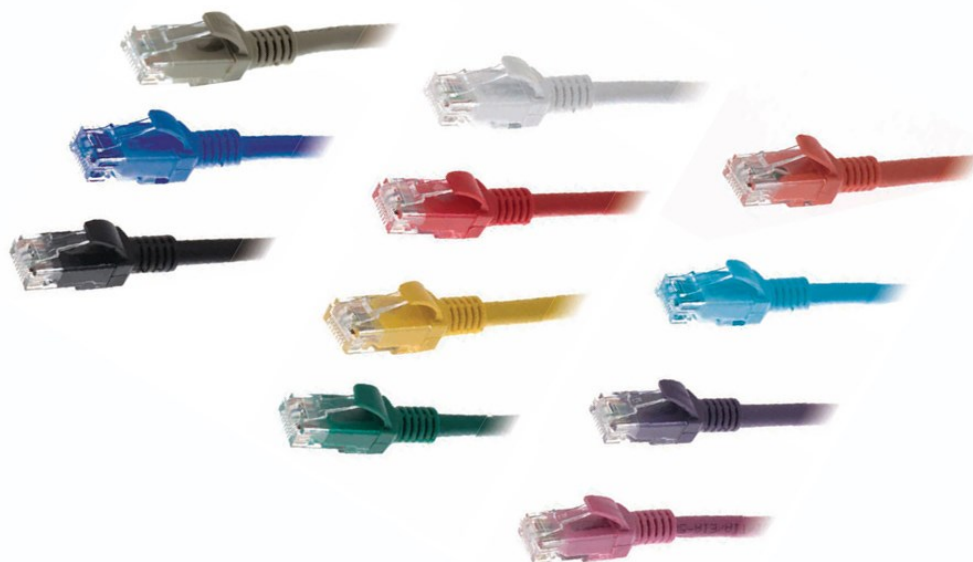
Technical information

Features:

- ◆ Fully moulded strain relief boot
- ◆ Anti-snap latch
- ◆ Cat6 compliant performance to ANSI/TIA-568 & ISO/IEC 11801
- ◆ LSZH sheath
- ◆ Flame retardant to IEC 60332-1
- ◆ Available in 11 different colours
- ◆ Available in a range of lengths

Construction

Sheath	LSZH
Conductors	Stranded bare copper, 24AWG
Plugs	Unshielded RJ45 (8P8C) with gold plated contacts
Strain Relief	Fully moulded slimline with anti-snap latch
Wiring Scheme	T568B



Part Numbers

Length	Grey	Blue	Black	White	Red	Yellow	Green	Orange	Lt Blue	Purple	Pink
0.25m	792375	790244	789074	790245	790567	792720	790568	790265	801639	792733	
0.3m	801957	802488	810115	800154	810111	802489	802490	810108		810110	810109
0.5m	776629	776630	779392	781950	776632	776633	776631	792668	801641	790254	792725
0.75	792358	792719	792723		792726	792721	792730				
1m	776634	776635	779396	781951	776637	776638	776636	786803	801643	779398	790267
1.5m	789724	788604	791303	790257	790251	790269	790274	792667	801645	790282	
2m	776639	776640	779400	781952	776642	776643	776641	779401	801646	779402	790273
3m	776644	776645	779404	781953	776647	776648	776646	786804	801647	779406	790271
4m	790256										
5m	776649	776650	779408	781954	776652	776653	776651	786805	801648	786802	792666
7m	790259	792257	790294	790296	792728	792722	792731	792732	801649	792734	
8m	790263	790272									
10m	776654	776655	779412	781955	776657	776658	776656	786806	801650	792661	792664
15m	776659	790277	792724		792729	790261	790246		801651		
20m	776660	776800		789031	790292	790284			801652		
25m	776661										
30m	776662										