



CAT5e RIGHT ANGLE PATCH PANELS

Technical information



Features:

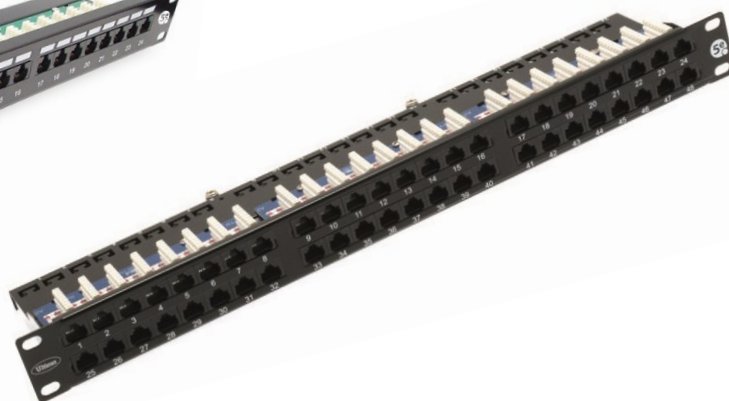
- ◆ 24 & 48 port variants
- ◆ Cat5e compliant performance
- ◆ 568A or 568B wiring
- ◆ Horizontal punchdown design
- ◆ LSA punchdown
- ◆ Integral cable strain relief facility
- ◆ Fully flat front fascia
- ◆ 25 year Ultima System Warranty

Materials

| | |
|-------------------|---|
| Panel | SPCC, 1.2mm thick, black |
| RJ45 Jack Housing | PBT+Glass Fibre, UL94V-0 |
| RJ45 Jack Contact | Phosphor bronze, nickel plated, finished with 50µ gold plating on plug contact area |
| IDC Housing | PC + Glass Fibre, UL92V-2 |
| IDC Contacts | Phosphor bronze, tin plated |
| PCB | FR4, UL94V-0 |

Performance

| | |
|-----------------------|---|
| Insertion Force | 20N max. |
| Retention Strength | 7.7kg between Jack and Plug |
| Operating Temperature | -10°C to 60°C |
| Mating Cycles | 750 cycles min. |
| IDC Wire Range | 22-26 AWG solid wire. Compatible with LSA punchdown tools |



Part Numbers

| Item | Description | Type | Ports | Height |
|--------|--------------------------------|------------|---------|--------|
| 771833 | Cat 5e Right Angle Patch Panel | Unshielded | 24 Port | 1U |
| 777649 | Cat 5e Right Angle Patch Panel | Unshielded | 48 Port | 1U |