

Fast-Fit Cat6 Shielded RJ45 Plugs

1. Where used, slide the Fast-Fit plug boot on to the cable.
2. Remove approximately 30mm of the cable sheath, taking care not to cut through the foil shield. Open up the foil shield and wrap around the cable sheath with the shiny side on the outside. Wrap the drain wire around the foil.



3. Cut back the central separator (if present) and separate the 4 pairs.
4. Untwist the pairs and straighten the individual wires.



5. Align the wires in the correct sequence.
6. Holding the plug with the contacts on the top, carefully insert the wires in to the plug. Push the cable as far in as it will go. Check that the wires are in the correct sequence.

1		White and Orange
2		Orange
3		White and Green
4		Blue
5		White and Blue
6		Green
7		White and Brown
8		Brown

(For 568A wiring simply swap the Orange and Green pairs)

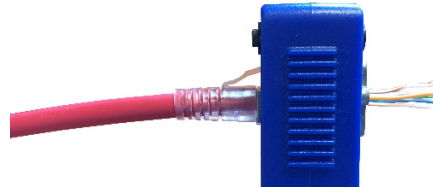


Fast-Fit Cat6 Shielded RJ45 Plugs

7. Trim back any excess foil shield and drain wire flush with the rear of the plug body. Where used, push the plug boot up to the rear of the plug body, ensuring that the side tabs are seated fully inside each side of the plug body.



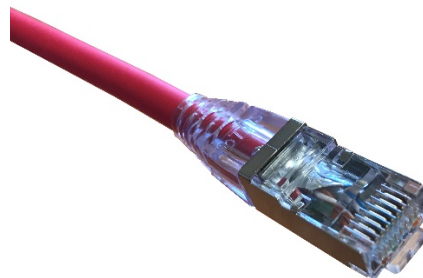
8. Insert the plug into the Fast-Fit crimping tool with the latch at the top, ensuring that it is fully located.



9. Squeeze the handles of the Fast-Fit Crimping Tool together until the ratchet reaches the end of its cycle and the excess wires have been fully trimmed.



10. Release the pressure on the handles and remove the terminated plug from the Fast-Fit Crimping Tool.



Recommended Tools

Part Number	Description	Purpose
786575	Side Cutters - 145mm	Cutting cable to length
993874	Cyclops Sheath Cutter	Cutting sheath
809585	Mini Flush Cutters	Cutting central separator and trimming wires
821426	Fast-Fit Crimping Tool	Termination and trimming of wires